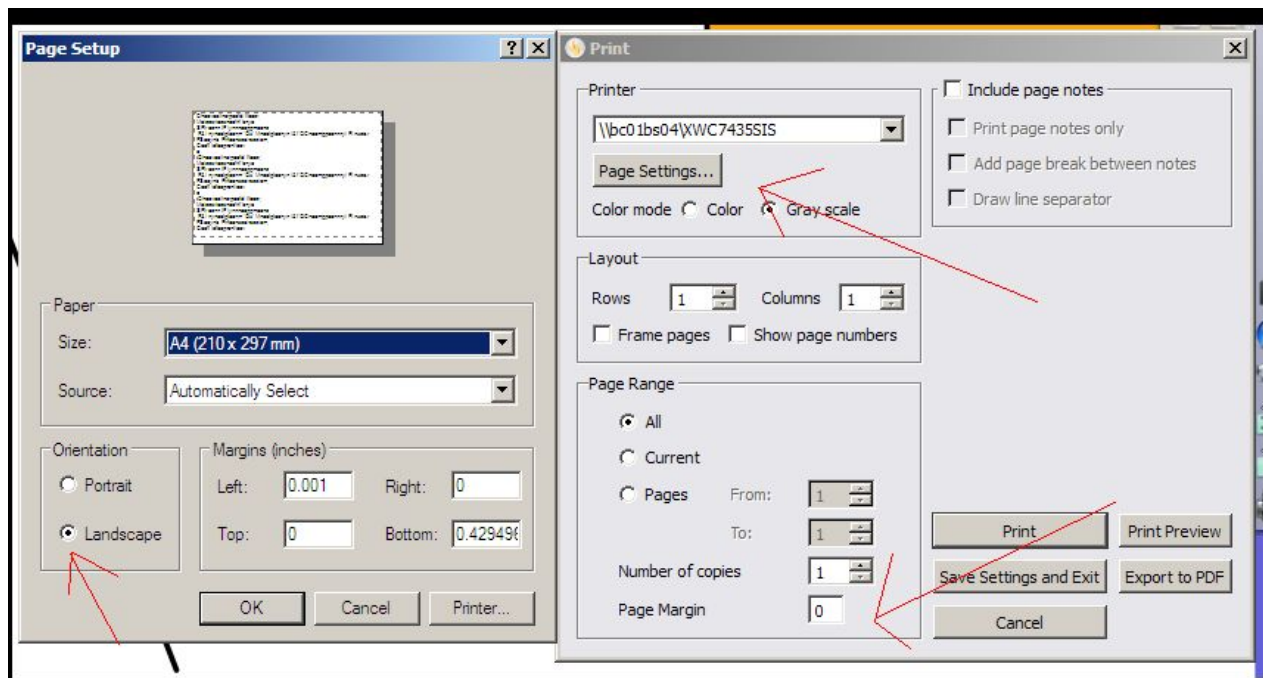


# Printing ActivInspire Flipcharts Fullscreen

Below are the Page Setup and Print Options that you need to select in order for your flipchart pages to print out full size on 8 1/2 x 11 paper. You may also reference the screenshot provided below.

1. Choose File-Print from the menu bar.
2. Select a printer if default printer not selected.
3. From the Print Options window, make sure under the "Layout" section, rows and columns are set to "1".
4. Under the Page Range option make sure the Page Margin is set to "0".
5. Click the "Page Settings" button, and make sure the "Orientation" is set to Landscape.
6. You can save these settings by clicking the "Save Settings and Exit" button.



rwenner - esmschools-2016